



Littleton Public Schools

33 Shattuck St. * P.O. Box 1486 * Littleton, MA 01460-4486
Phone: (978) 540-2500 * Fax: (978) 486-9581 * www.littletonps.org



KELLY R. CLENCHY, Ed.D., SUPERINTENDENT OF SCHOOLS

Elizabeth M. Steele, Director of Teaching and Learning
Lyn A. Snow, Director of Student Services
Steven F. Mark, Business Manager

Natalie A. Croteau, Technology Systems Coordinator
Julie Lord, Instructional Technology Coordinator

Littleton Public Schools Wellness Committee Meeting Notes March 26, 2024 7:00pm

A. Call to Order/Introductions

Natalie Croteau
Leah Botko
Libby Donegan
Kym Albertelli
Marc O'Meara

B. How is everyone feeling- SEL check-in

C. Wellness Policy Rewrite Update:

- a. MAS-C policy will replace our current policy, our edited version will turn into 'Wellness Program and Procedures' to be distributed to staff yearly

D. Lyn Snow Update on Grants

- a. The Kimball Foundation voted to approve the grant proposal. Next step, present to town meeting in May.

E. MA School Wellness Champion invitation to the JSI Healthy Kids, Healthy Programs Summit: More Than a Meal- Fueling the Commonwealth

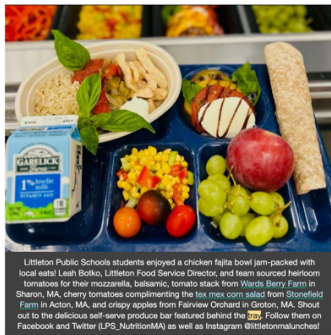
- a. Littleton PS will be recognized for their commitment to rewriting the Wellness Policy

F. Winning Terrific Tray Submission in October

- a. Littleton PS cafeteria was featured on the DESE newsletter in October with their Chicken Fajita Bowl featuring local heirloom tomatoes, cherry tomatoes, and apples

It is the policy of the Littleton Public Schools not to discriminate on the basis of race, gender, religion, national origin, color, homelessness, sexual orientation, gender identity, age or disability in its educational programs, services, activities, or employment practices. Further information may be obtained by contacting Lyn Snow, District Equity Coordinator at 978-540-2500, lsnow@littletonps.org or 33 Shattuck Street, P.O. Box 1486, Littleton, MA 01460.

Our mission is to foster a community of learners who strive for excellence and prepare each student to be a successful, contributing citizen in a global society.



G. New breakfast program news

- a. Russell Street School, Littleton Middle School, and Littleton High School have started a new breakfast menu rotation, the offerings are currently being evaluated with surveys.

H. Coming to Lunch: DESE representative and Legislator coming to lunch to see our high-quality culturally relevant school meals featuring local ingredient

- a. Date TBD

I. MCAS and our Support Animals

- a. MCAS started 3/26, support animals walking around the school to help the students emotionally

J. Upcoming Connections Speaker Series Events:

Tuesday, March 19th - Universal Design for Learning within a Multi-Tiered System of Support with Tara Trainor

Tuesday, April 30th - Defining Equity and Cultural Proficiency with Dr. Kalise Wornum (replacing our April meeting)

Amazing speaker! Tell your friends

Tuesday, May 21st - Addressing Challenging Behaviors with Charlie Applestein

K. Resource share from Nashoba Board of Health

www.nashoba.org/calendar

[NASHOBA ASSOCIATED BOARDS OF HEALTH QUARTERLY NEWSLETTER](#)

- a. Take away? Flu B, Stomach Flu and Ticks are all rampant right now.

L. Podcast/Recipe [Milk and Honey Nutrition](#) [Mediterranean Quinoa Wrap](#)

It is the policy of the Littleton Public Schools not to discriminate on the basis of race, gender, religion, national origin, color, homelessness, sexual orientation, gender identity, age or disability in its educational programs, services, activities, or employment practices. Further information may be obtained by contacting Lyn Snow, District Equity Coordinator at 978-540-2500, lsnow@littletonps.org or 33 Shattuck Street, P.O. Box 1486, Littleton, MA 01460.

Our mission is to foster a community of learners who strive for excellence and prepare each student to be a successful, contributing citizen in a global society.

[Stuffed Sweet Potato Recipe](#) Podcast – [Mel Robbins 3 small decisions that make you feel incredible](#)

It is the policy of the Littleton Public Schools not to discriminate on the basis of race, gender, religion, national origin, color, homelessness, sexual orientation, gender identity, age or disability in its educational programs, services, activities, or employment practices. Further information may be obtained by contacting Lyn Snow, District Equity Coordinator at 978-540-2500, lsnow@littletonps.org or 33 Shattuck Street, P.O. Box 1486, Littleton, MA 01460.

Our mission is to foster a community of learners who strive for excellence and prepare each student to be a successful, contributing citizen in a global society.